

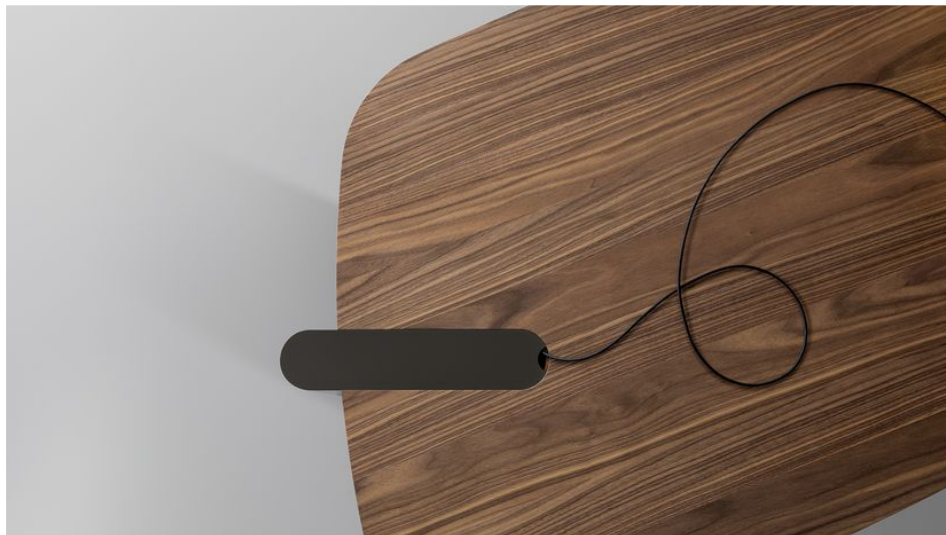
# BONALDO

## Flatiron

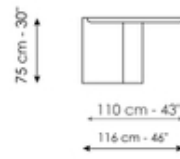
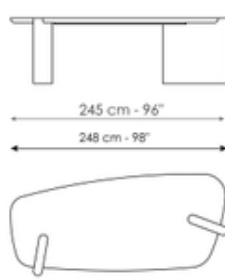
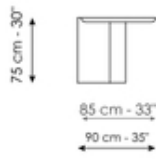
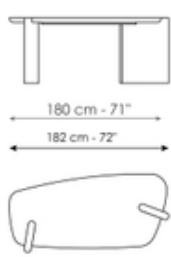
Designer: Mauro Lipparini



Flatiron fully satisfies a multiplicity of roles. A presentational desk, writing desk, table: in every guise it comes across as a significant element thanks to the powerful sculptural expression of the harmonious, rigorous and elementary shapes and volumes. The shape of the body is a reference to the famous Flatiron Building skyscraper in New York: with a new formal line of semi-abstract inspiration, the softness of the surfaces and the shape of the rounded parallelepiped legs fit into the formal continuum of the wooden top with its organic lines. Flatiron's aesthetic lexicon gives it a leading role not just in the panorama of professional executive furniture, but also in prestigious representative dining and living environments. A characteristic feature of the Flatiron top is the metal insert, an extension of the leg which, in addition to its aesthetic function, can also perform a practical one: the insert has a cable slot that allows the desk top to be kept tidy.



# Data sheet



## Flatiron 180

Width: 180cm

Depth: 85cm

Height: 75cm

## Flatiron 245

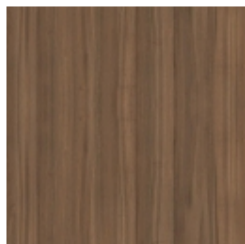
Width: 245cm

Depth: 110cm

Height: 75cm

# Finishes

## Top



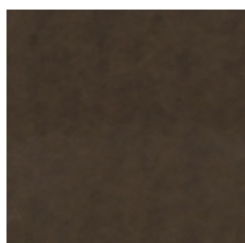
**Veneered wood**  
Walnut Canaletto



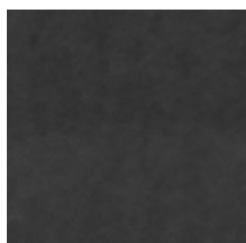
**Veneered wood**  
Brushed coal oak

---

## Base



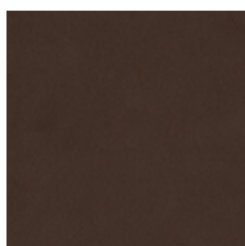
**Mat lacquered wood**  
Brushed bronze



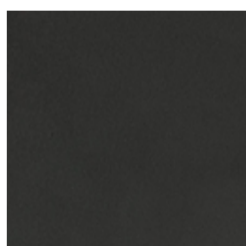
**Mat lacquered wood**  
Brushed lead

---

## Top inserts



**Painted metal**  
Mat bronze



**Painted metal**  
Mat lead

---

Materials, fabrics, leathers, colors and finishes are approximate and may slightly differ from actual ones. You can find the complete collection of Bonaldo fabrics and leathers on the website <https://bonaldo.biz>