

BONALDO

Youpi Office

Designer: Fabrice Berrux

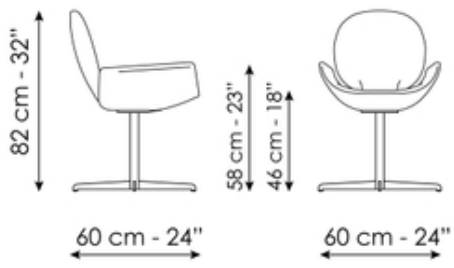


Youpi Office, belonging to the family of the same name, retains its distinctive character and unique design, reinterpreting it in a version tailored for the workplace. Designed by Fabrice Berrux, this chair is distinguished by a back profile that recalls a stylised human figure, a symbol of welcome and comfort.

The structure harmoniously combines different shapes, all covered in fabric, leather or eco-leather for an elegant and refined aesthetic. The backrest blends with the wide seat, while the four-spoke metal swivel base ensures stability, practicality and modernity.



Data sheet



Youpi Office

Width: 60cm

Depth: 60cm

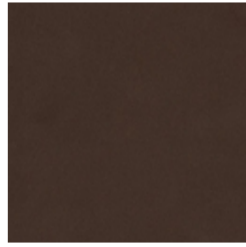
Height: 82cm

Finishes

Swivel base



Painted metal
Mat brass



Painted metal
Mat bronze



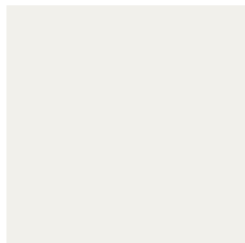
Painted metal
Mat copper



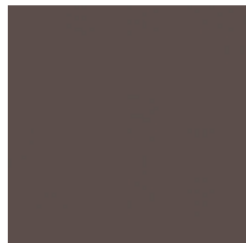
Painted metal
Mat lead



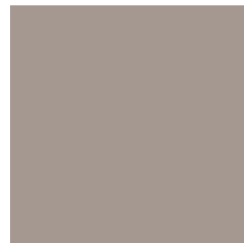
Painted metal
Mat pearl gold



Painted metal
Mat white



Painted metal
Mat brown



Painted metal
Mat dove grey



Painted metal
Mat black



Painted metal
Supreme anthracite

Materials, fabrics, leathers, colors and finishes are approximate and may slightly differ from actual ones. You can find the complete collection of Bonaldo fabrics and leathers on the website <https://bonaldo.biz>