

BONALDO

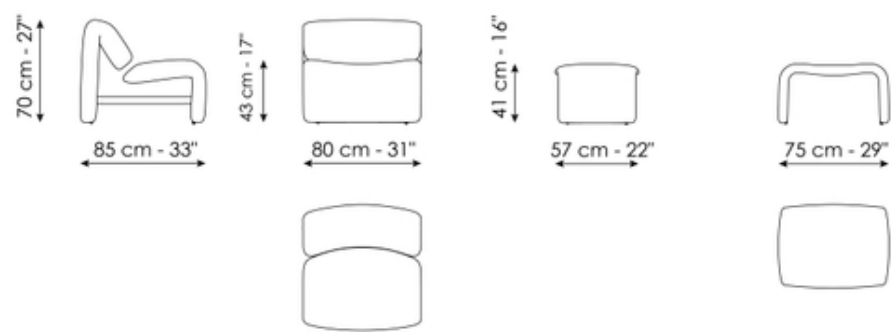
Avant-Garde

Designer: Fabrice Berrux



Simple lines and a meticulously studied alternation of full and empty spaces in a real challenge to the idea of balance: this is the starting point of the Avant-Garde armchair designed by Fabrice Berrux. The backrest and seat are two separate pieces made up of single curved lines which are connected to each other by a metal tube. The space between the elements not only lightens the visual perception, but creates an effect of suspension in a subtle interplay of balances. The separation between the seat and backrest is not only an exercise in technical mastery and aesthetic research, but a functional element that gives the frame a delicate flexibility. The two parts adapt naturally to the shape of the body, ensuring optimal comfort and a balanced seating experience. Thanks to its unmistakable style, Avant-Garde stands out as an authentic eye-catcher in spaces intended for a wide range of uses: as such, especially when combined with the pouf, it is perfect for both giving character to a living area with an unconventional spirit, as well as fitting naturally into an elegant waiting room or a hotel lounge.

Data sheet



Avant-Garde

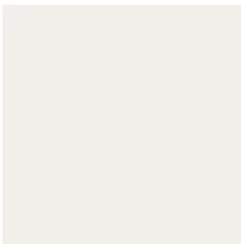
Width: 80cm
Depth: 85cm
Height: 70cm

Avant-Garde pouf

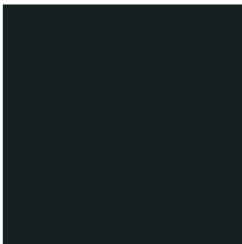
Width: 75cm
Depth: 54cm
Height: 41cm

Finishes

Rod



Painted metal
Mat white



Painted metal
Mat black



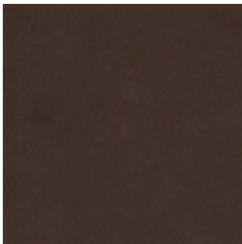
Painted metal
Supreme anthracite



Painted metal
Mat dove grey



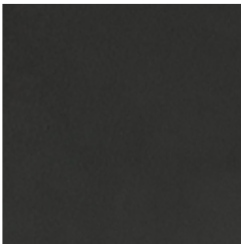
Painted metal
Mat brass



Painted metal
Mat bronze



Painted metal
Mat copper



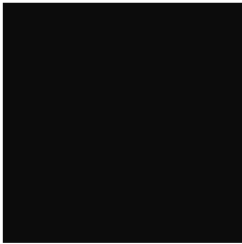
Painted metal
Mat lead



Painted metal
Mat pearl gold



Metal finish
Clouded chrome



Metal finish
Dark nickel



Metal finish
Brown nickel

Materials, fabrics, leathers, colors and finishes are approximate and may slightly differ from actual ones. You can find the complete collection of Bonaldo fabrics and leathers on the website <https://bonaldo.biz>